

Proportional hydraulic bank

The servo control MOD10 is a block of modular hydraulic pistons, electrically controlled by a couple of proportional valves, with mechanical feedback.

The product has a high reliability thanks to careful engineering and production process carried out with the most advanced technologies.

The installation of this block adds to a hydraulic valve the remote control, by cable or by radio. The specific design for the dual control rods allows its installation on any type of hydraulic mechanical valve.

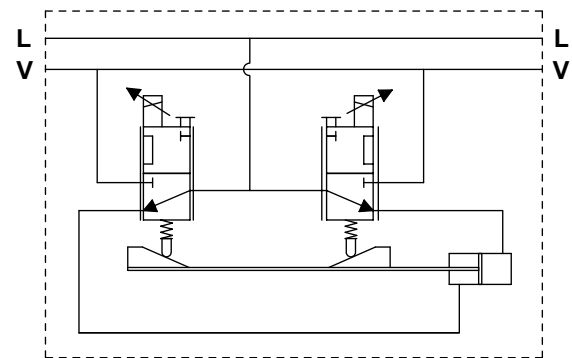
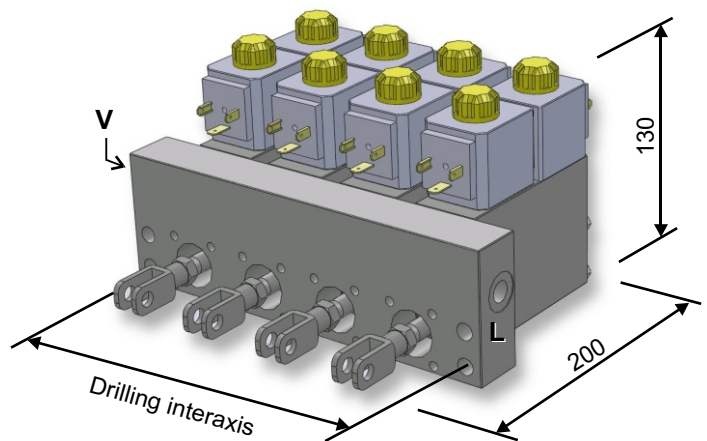
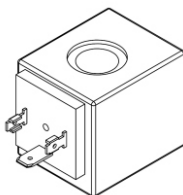
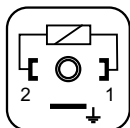
Electrical specifications:

- Power supply: 12V or 24V
- Working current range: 600 ÷ 1400 mA (12V)
300 ÷ 700 mA (24V)
- Frequency: 50 Hz
- Working temp. range: -20 ÷ +60 °C
- Connectors: DIN 43650 A

Hydraulic / mechanical specifications:

- Mechanical stroke: ±13 mm
- Feedback: Mechanical
- Fluid type: Mineral oil 10 ÷ 200 cSt
- Max blow-by: 100 cc/minute
- Max working pressure: 30 bar
- Max thrust: 1300 N (at 30 bar)
- Weight (each section): 1.6 kg approx.
- Dimensions (mm): 200 (W) x 130 (H) x 35 (D)
- Connections: G1/4" BSPP

Electrical connections:



Hydraulic scheme

TYPE	A (mm)	B (mm)	C (mm)
4 functions	40	182	200
	46	200	218
	50	212	230
6 functions	40	262	280
	46	292	310
	50	312	330
8 functions	40	342	360
	46	384	402

